



Start Here! Software Installation SCI-3100

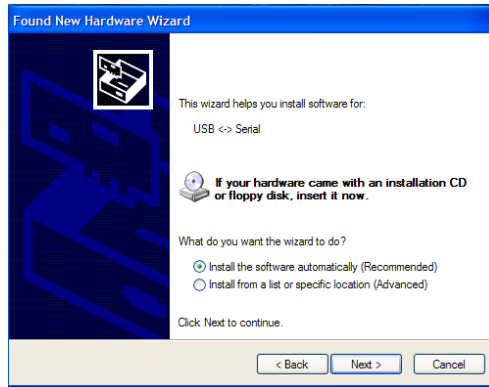
	Software Installation
	Install the SkyTRX software BEFORE connecting your SCI-3100 series tracking device to your computer. See below.
	Installing the SkyTRX 7.0 Software
	Place your SkyTRX installation CD into your computer's CD drive tray. Follow the prompts. For a normal installation, click Next through most of the prompts. After installation, LEAVE the CD in your CD Drive.

Connecting the SCI-3100 to your computer

	<u>You must go through these steps to successfully download data from your SCI-3100.</u>
Step 1	Preparing to Install
	Ensure that you have your SkyTRX disk in your CD drive.
	With your 3100 tracking system OFF , plug it in to your computer's USB port.
	You can leave the tracking unit off during this installation. Turn it on when you want to download data.
Step 2	New Hardware Found
	Select “No, not at this time” and hit Next . (If your computer does not automatically find your device, reboot your computer with the SCI-3100 connected to your PC).

Step 3

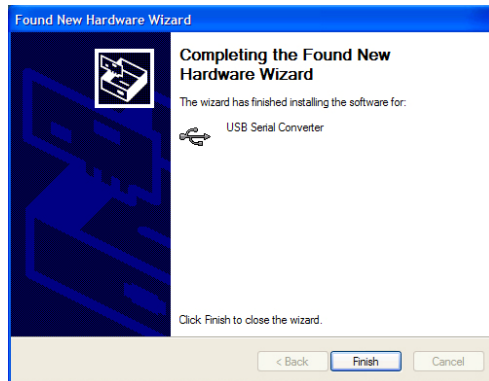
Install Software



Select “**Install software automatically**” and hit **Next**.

Step 4

Finish Installation



Select **Finish**.

WARNING : This process will repeat (Steps 2-4). Do not cancel it.

You are now ready to download tracking data by running the SkyTRX software.